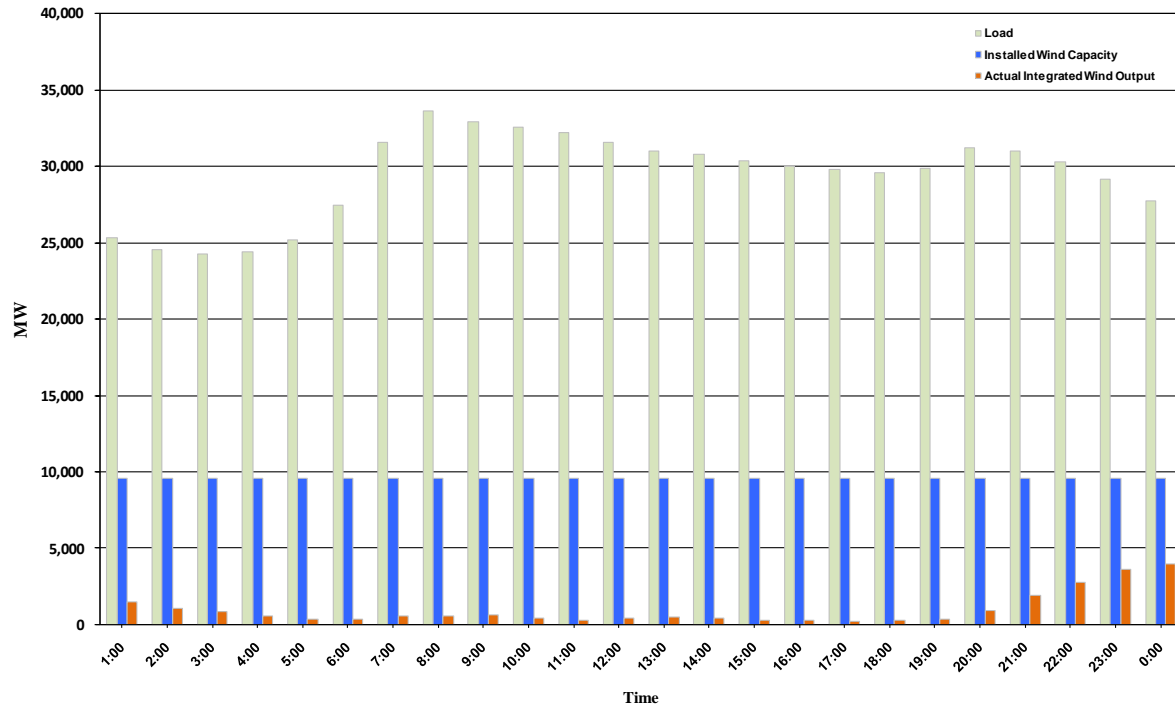




ERCOT Grid Operations Wind Integration Report: 11/05/10

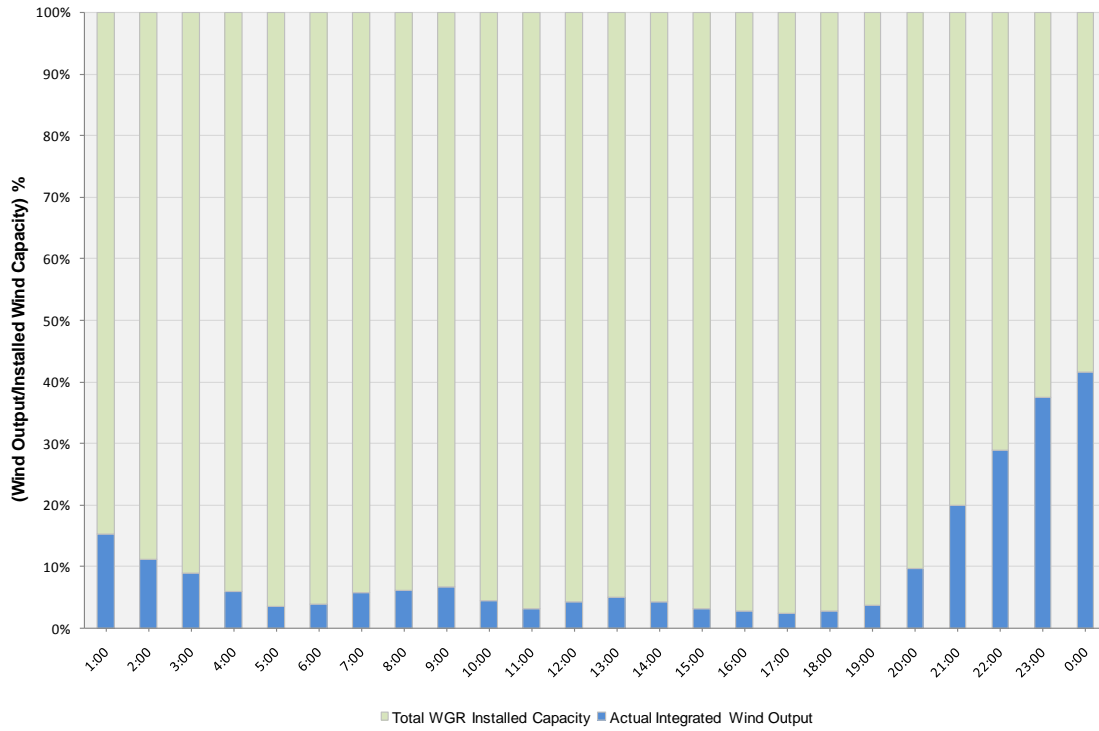
Peak Load	33,635 MW
Load Peak Hour	08
Wind Record 06/12/10	7016 MW
Max Wind value	4445 MW
Wind Peak Hour	23:51:40
Wind Integration %	16.25

Hourly Average Actual Load vs. Actual Wind Output
11-05-2010

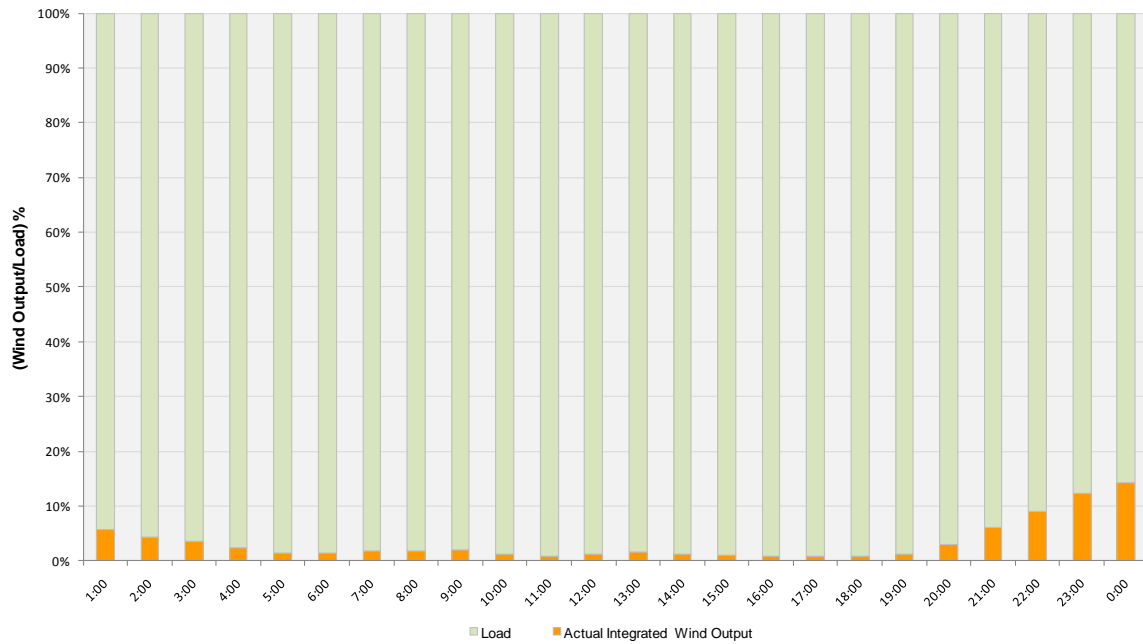




Actual Wind Output as a Percentage of the Total Installed Wind Capacity
11-05-2010



Actual Wind Output as a Percentage of the ERCOT Load
11-05-2010





ERCOT Load vs. Actual Wind Output 10/29/10 - 11/05/10

